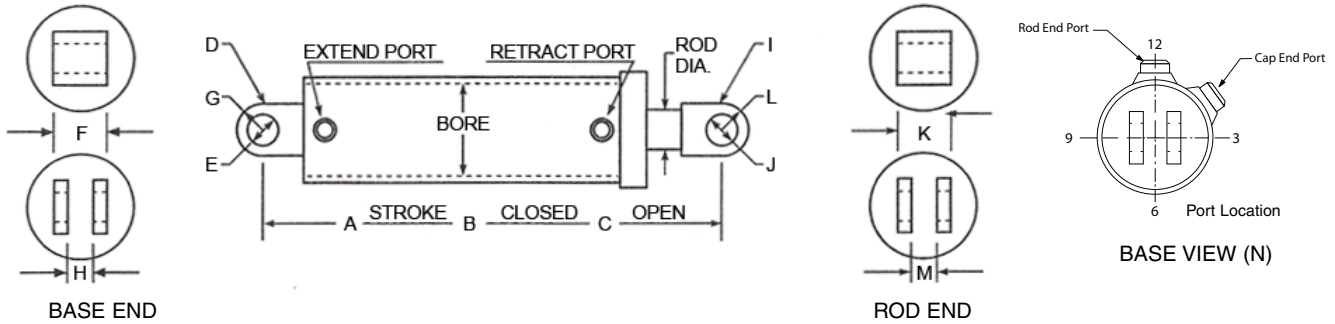


**HERCULES CUSTOM CYLINDER APPLICATION DATA FORM**



Cylinder application \_\_\_\_\_

Single - or Double-acting \_\_\_\_\_ System operating pressure Normal \_\_\_\_\_ Max. \_\_\_\_\_

Bore \_\_\_\_\_ Is there a relief valve in system \_\_\_\_\_ Setting \_\_\_\_\_

Rod diameter \_\_\_\_\_ System flow in G.P.M. Min. \_\_\_\_\_ Max. \_\_\_\_\_

Head & gland design \_\_\_\_\_ System operating temp. Normal \_\_\_\_\_ Max. \_\_\_\_\_

Piston design \_\_\_\_\_ Fluid type \_\_\_\_\_

Mounting conditions \_\_\_Vert.\_\_\_Horz.\_\_\_Incline angle Load holding requirements \_\_\_\_\_

Any side or eccentric loading possible \_\_\_\_\_ Environmental condition \_\_\_\_\_

Average cycles per week \_\_\_\_\_ Cylinder max force during: Push\_\_\_Pull\_\_\_Both \_\_\_\_\_

A : Total stroke \_\_\_\_\_ I : Rod mount type or code \_\_\_\_\_

B : Closed length \_\_\_\_\_ J : Rod pin diameter \_\_\_\_\_

C : Open length \_\_\_\_\_ K : Rod mount width \_\_\_\_\_

D : Base mount type or code \_\_\_\_\_ L : Rod mount radius \_\_\_\_\_

E : Base pin diameter \_\_\_\_\_ M : Rod clevis gap (if applicable) \_\_\_\_\_

F : Base mount width \_\_\_\_\_ N : Base End Port Location \_\_\_\_\_

G : Base mount radius \_\_\_\_\_ Rod End Port Location \_\_\_\_\_

H : Base Clevis Gap (if applicable) \_\_\_\_\_

Special mounting (if applicable) \_\_\_\_\_

Extend port size and type \_\_\_\_\_ Extend port location \_\_\_\_\_

Retract port size and type \_\_\_\_\_ Retract port location \_\_\_\_\_

Special features or comments \_\_\_\_\_  
(This includes break-a-way force, shock loads, etc.)

Requested by: Company Name \_\_\_\_\_ Quantity / Shipment \_\_\_\_\_

Address \_\_\_\_\_ Annual Usage \_\_\_\_\_

City \_\_\_\_\_ State \_\_\_\_\_ Zip \_\_\_\_\_

Phone \_\_\_\_\_ Fax \_\_\_\_\_

Contact \_\_\_\_\_

**Phone (800) 777-5617 Fax (800) 759-6391**



*Hercules Sealing Products*  
**1016 N. Belcher Rd**  
**Clearwater, FL 33765**